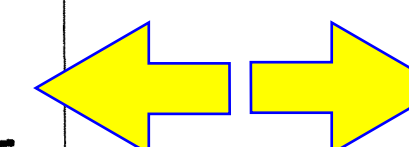


SCIENCE BUILDING
UNIVERSITY OF NORTH CAROLINA AT WILMINGTON
CODE 49368 ITEM 301 ID#081220801A

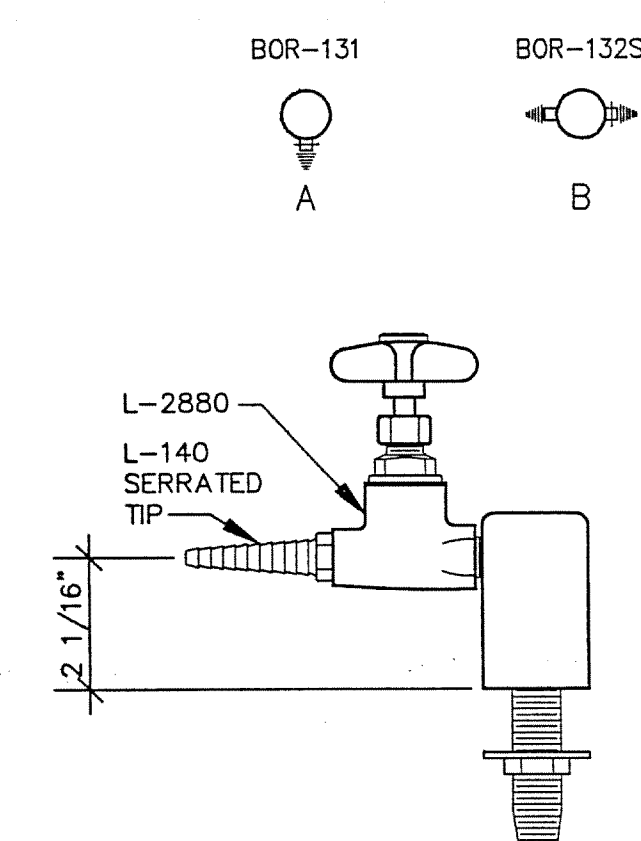
SHEET TITLE:

LAB FURNISHINGS
SERVICE FITTINGS

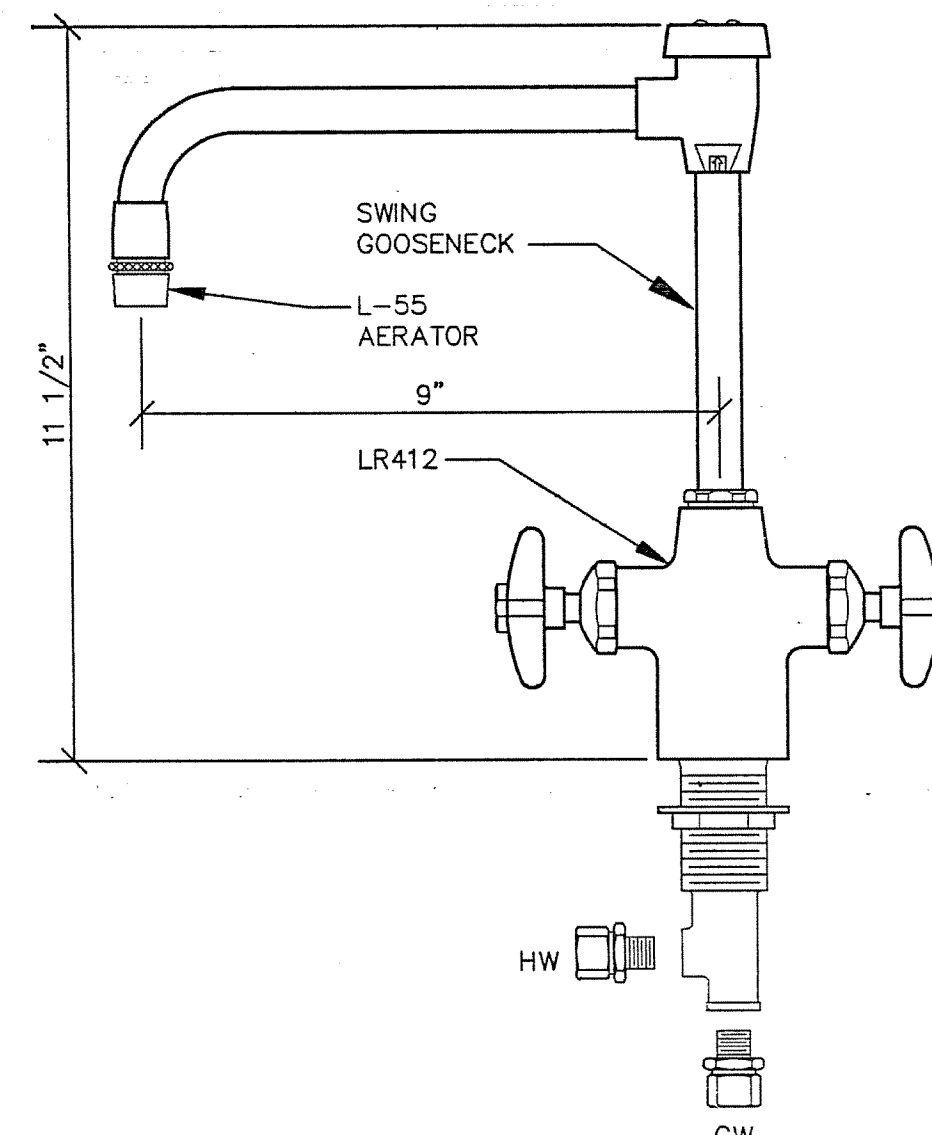


SHEET NO.:

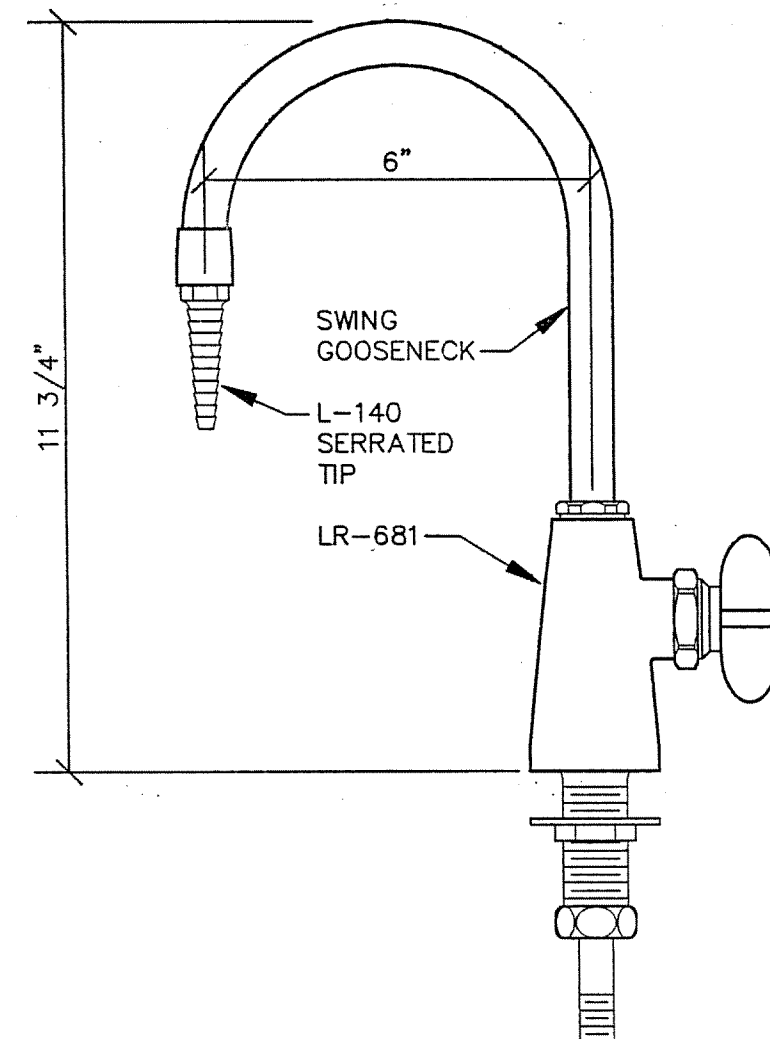
LF16



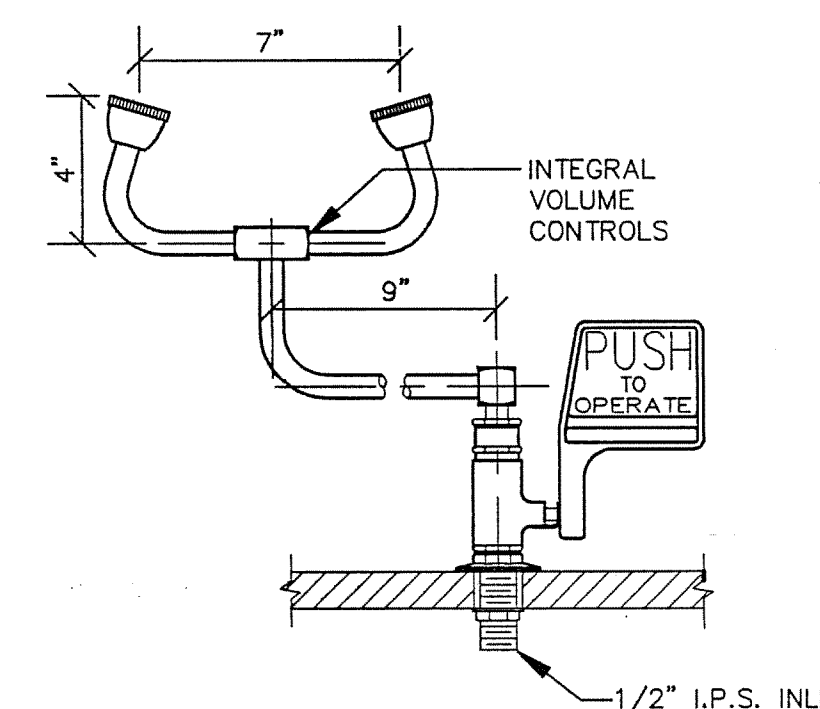
DECK MOUNTED NEEDLE VALVE FOR GAS, LAB AIR, LAB VACUUM
1A = No. L-2880-BOR131-140
1B = No. L-2880-BOR132S-140
SERVICE FITTING #1 G-1A G-1B
LA-1A LA-1B
LV-1A LV-1B



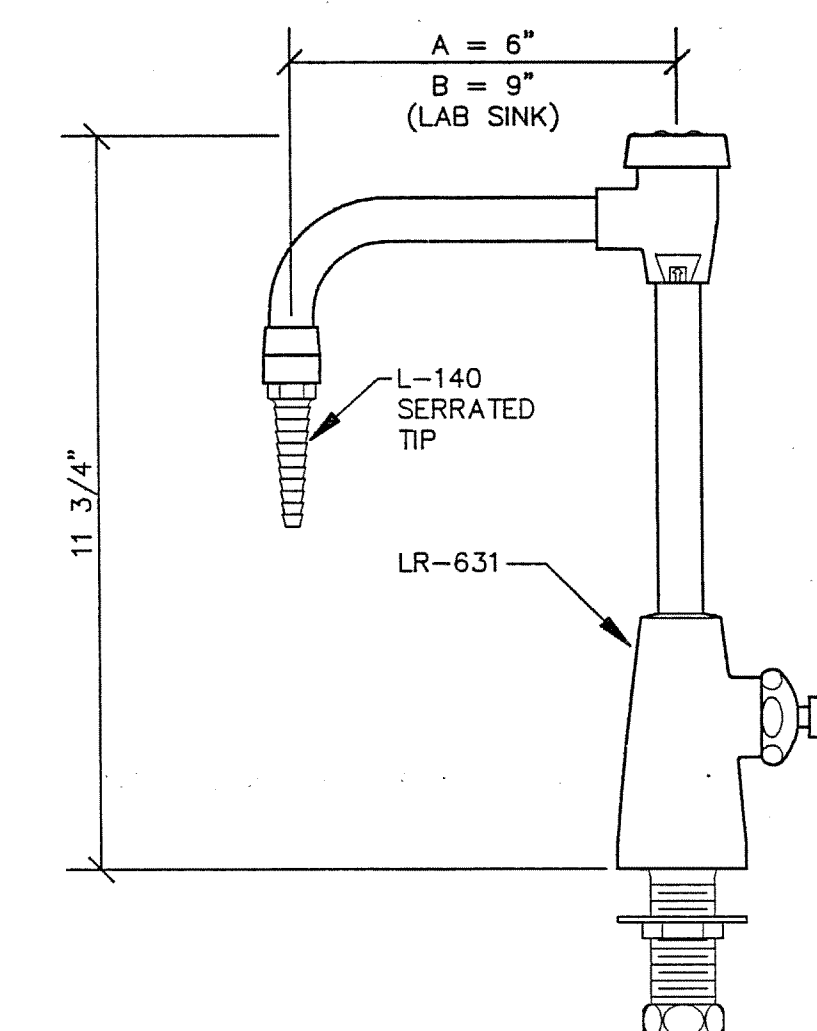
DECK MOUNTED MIXING FAUCET
No. LR-412-VB
SERVICE FITTING #2 HW-CW-2



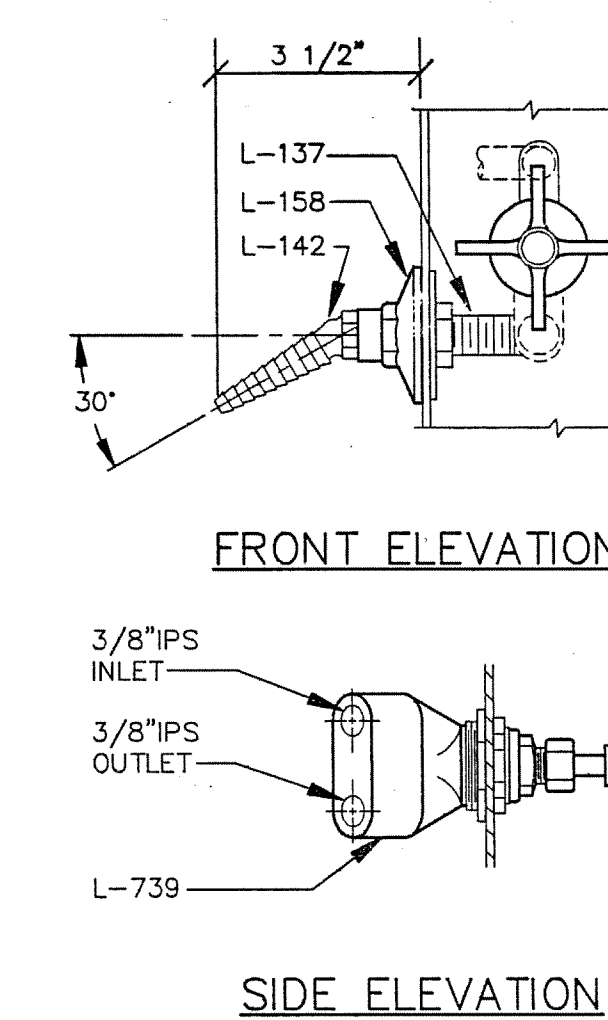
DECK MOUNTED HIGH PURITY WATER FITTING
No. LR681-140
HOT TIN LINED w/NON-SELF CLOSING VALVE
SERVICE FITTING #3 DW-3



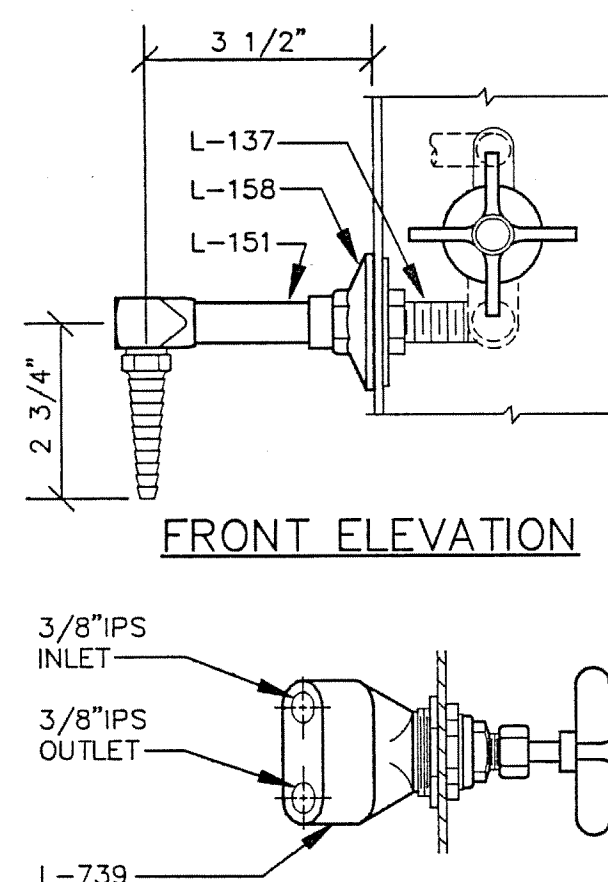
DECK MOUNTED EMERGENCY EYEWASH
No. EW-806
SERVICE FITTING #4 EW-4



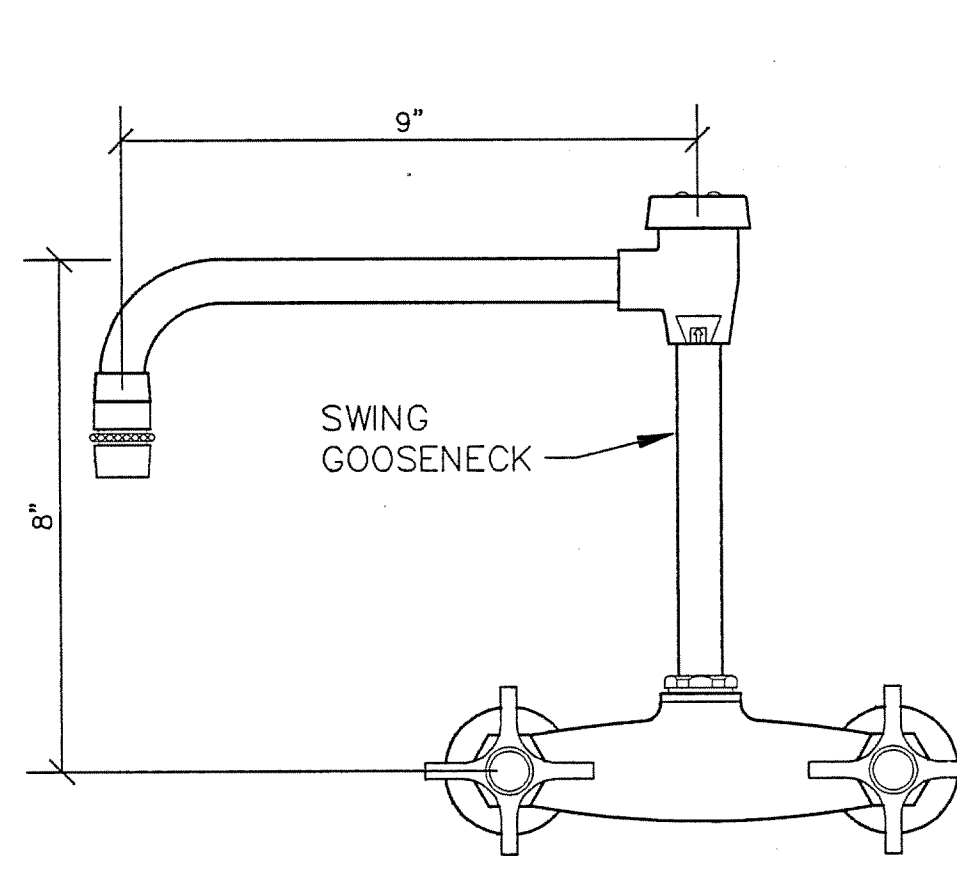
DECK MOUNTED WATER FITTING
No. LR631-140-137 RIGID GOOSENECK
No. LR631-55-137 SWING GOOSENECK @ LAB SINKS
SERVICE FITTING #5 CW-5



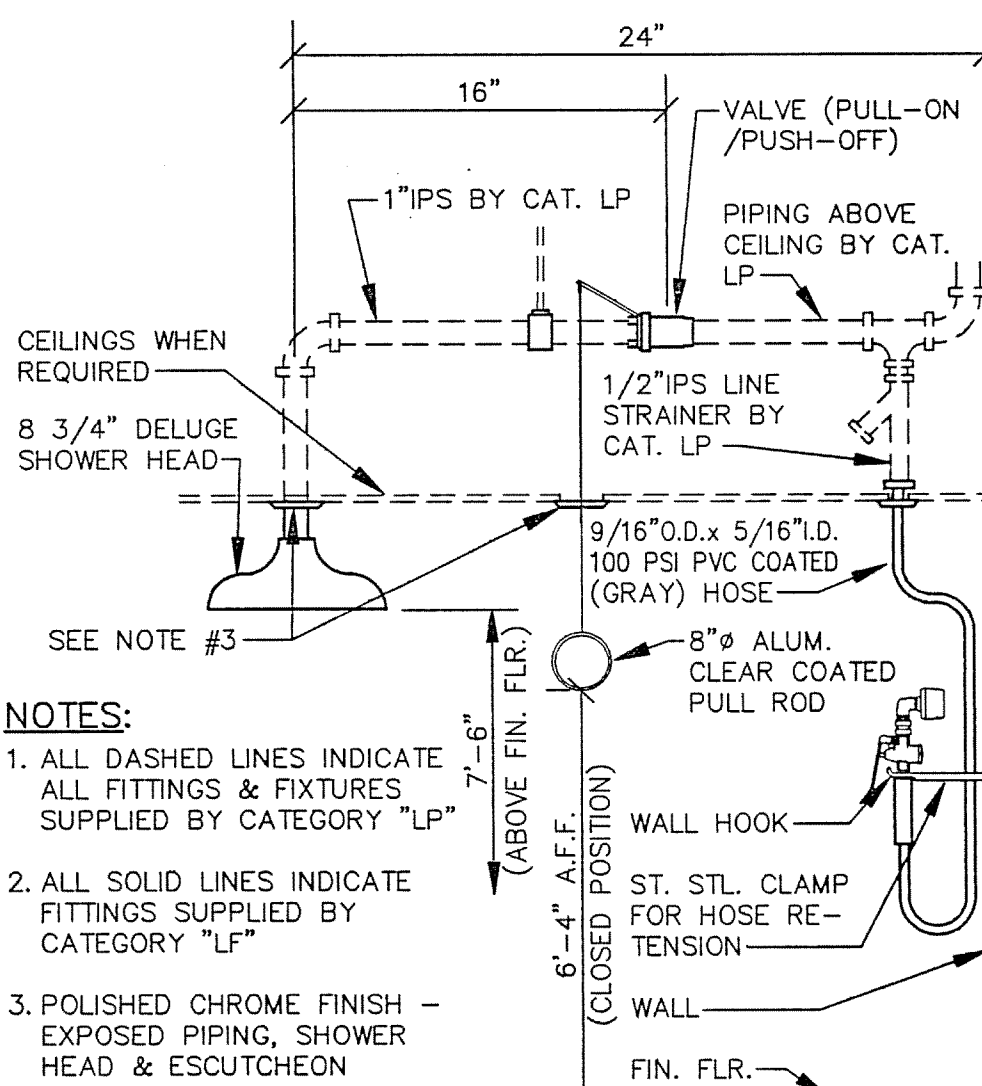
HOOD MOUNTED FITTING FOR SPECIAL GAS, GAS, LAB AIR & LAB VACUUM
No. L-739HP-142-158-137 (SPECIAL GAS)
No. L-739-142-158-137
SERVICE FITTING #6 SG-6X LA-6
G-6 LV-6



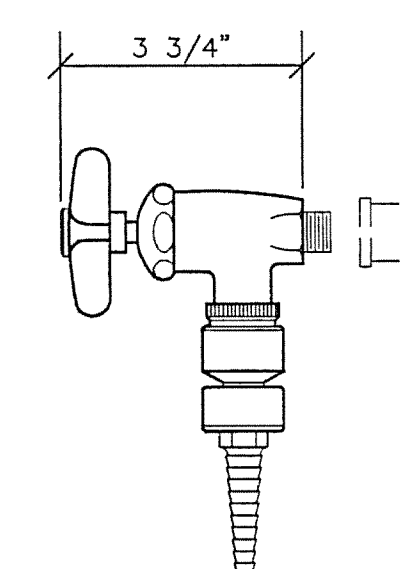
HOOD MOUNTED WATER FITTING
No. L-739-137-151-140-VB
SERVICE FITTING #7 CW-7
CWA-7A



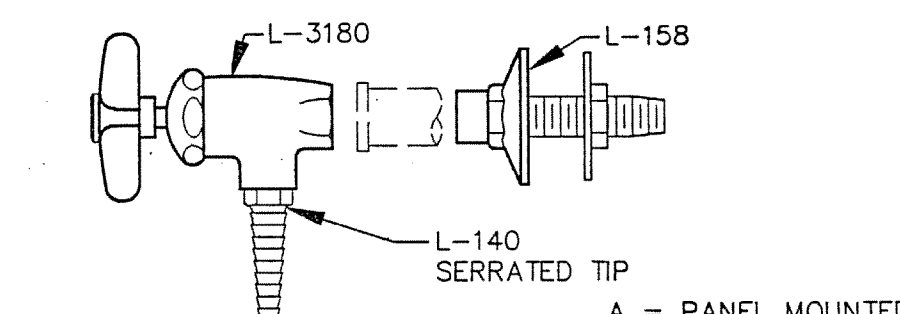
PANEL MOUNTED MIXING FAUCET
No. L-1712-55-137
SERVICE FITTING #8 HW-CW-8



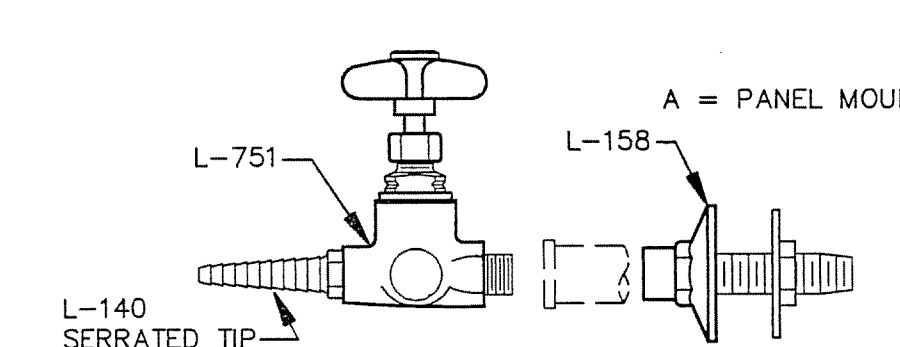
EMERGENCY SHOWER & DRENCH HOSE
No. L-380-U-EW-1015
SERVICE FITTING #9 ES-DH-9



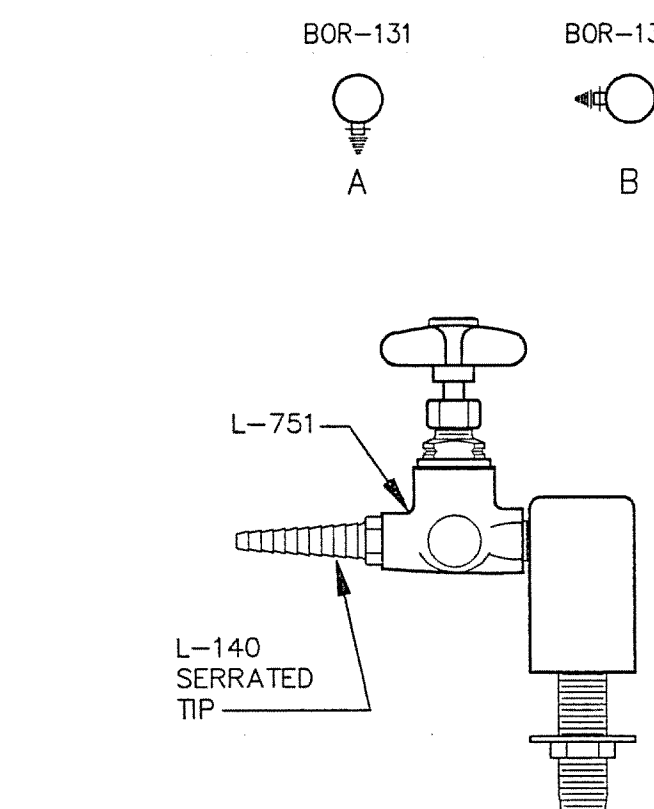
PIPE MOUNTED WATER FITTING
No. L-3100-110-140
SERVICE FITTING #10 CW-10



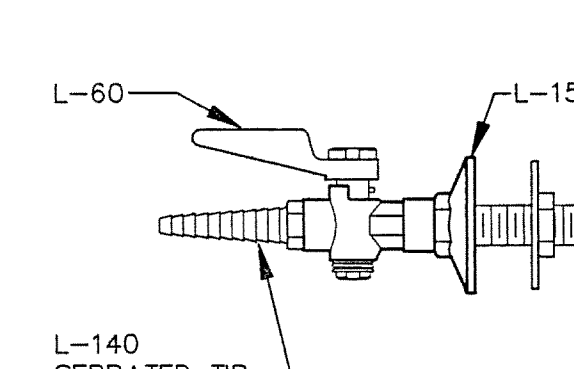
PANEL OR PIPE MOUNTED NEEDLE VALVE FOR GAS, LAB AIR, LAB VACUUM
11 = No. L-3180-140
11A = No. L-3180-140-158
G-11 G-11A
LA-11 LA-11A
LV-11 LV-11A
SERVICE FITTING #11



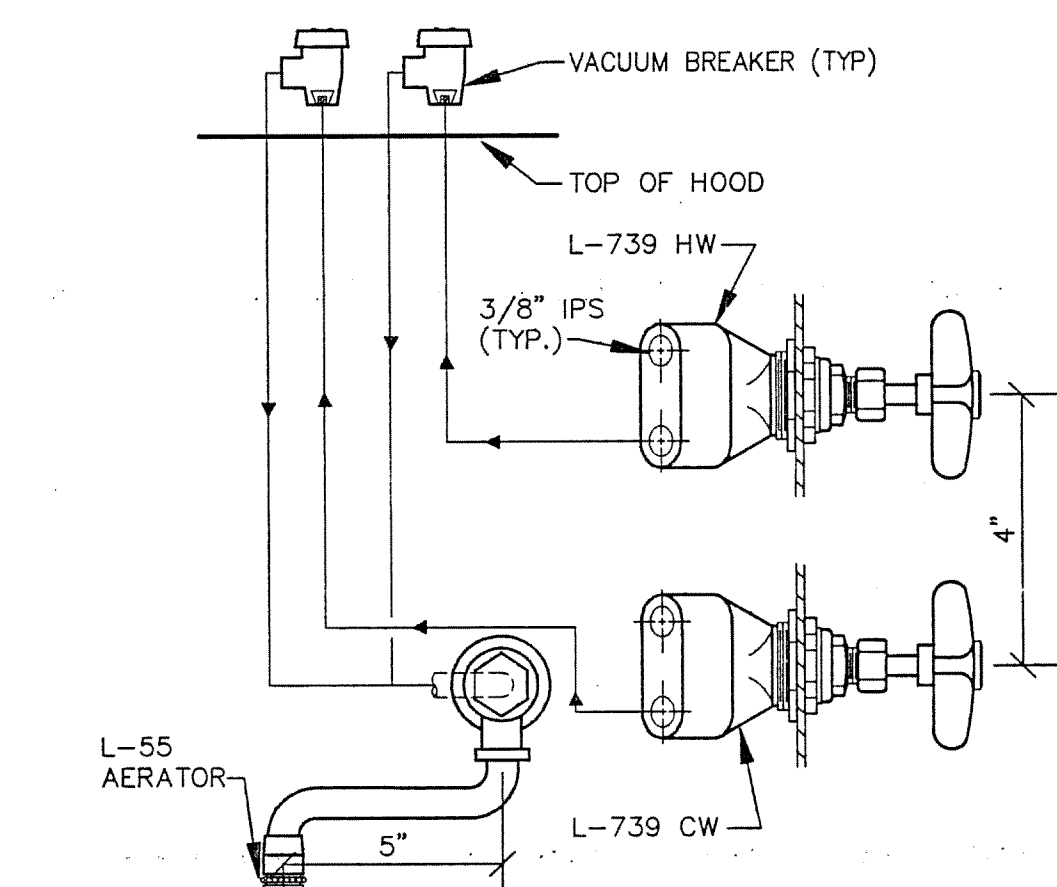
PANEL OR PIPE MOUNTED NEEDLE-POINT VALVE FOR SPECIAL GAS
12 = No. L-751-140
12A = No. L-751-140-158
SG-12 SG-12A
SERVICE FITTING #12



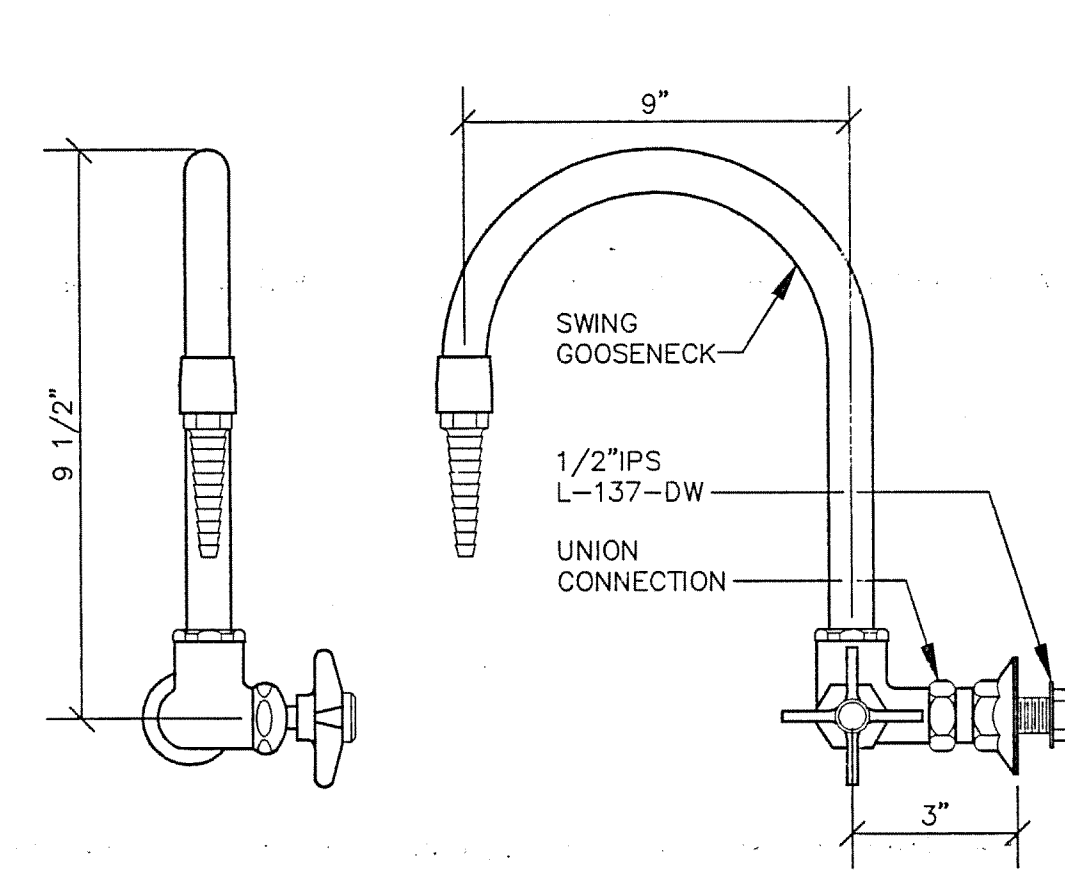
DECK MOUNTED NEEDLE-POINT VALVE FOR SPECIAL GAS
No. L-751-BOR132S-140-137
SERVICE FITTING #13 SG-13A
SG-13B



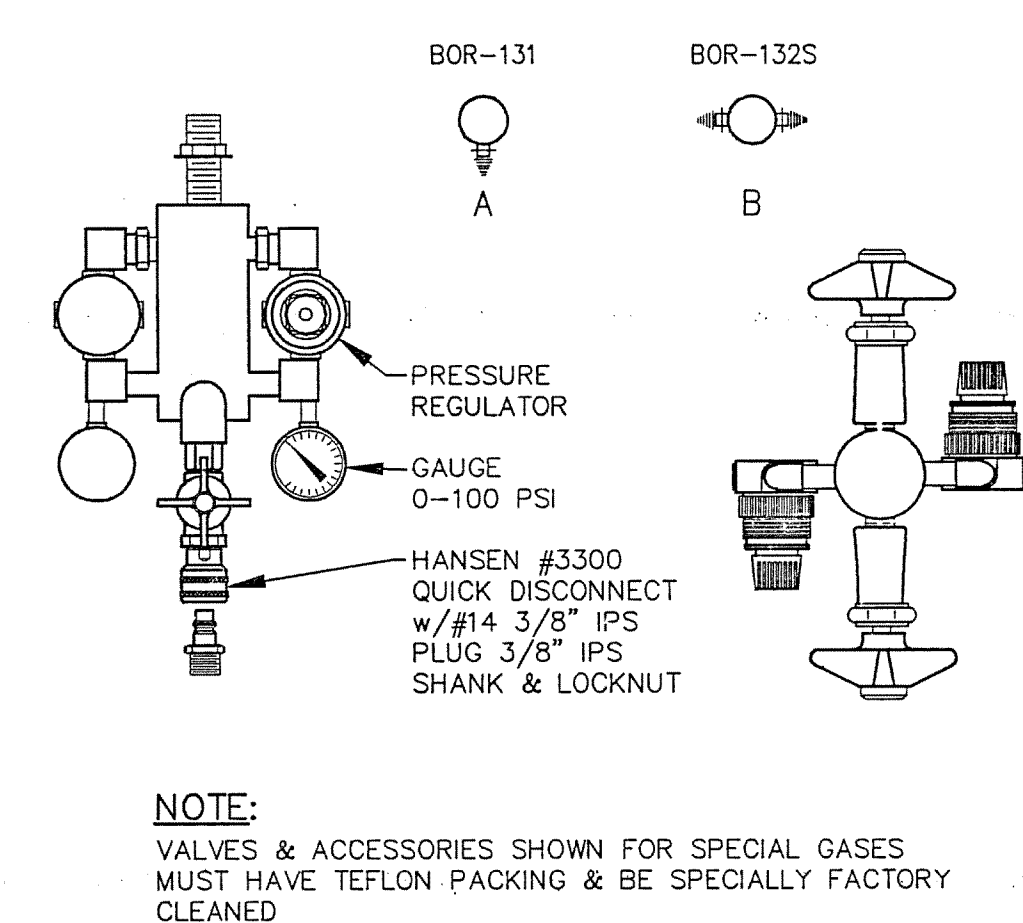
PANEL MOUNTED KEY HOSE COCK FOR GAS & LAB AIR
No. L-60-140-158
SERVICE FITTING #14 G-14
LA-14



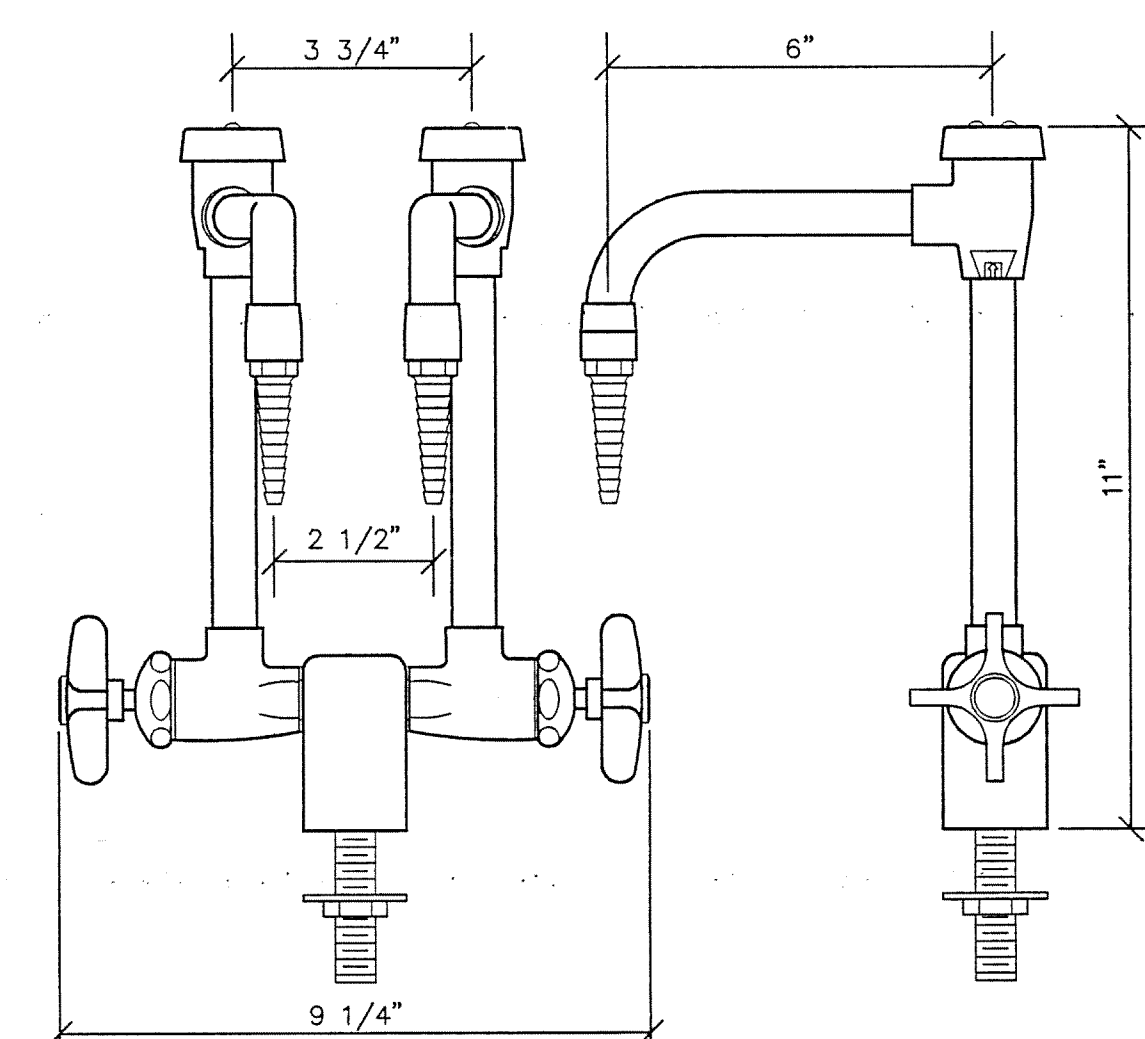
HOOD MOUNTED FITTING FOR HW-CW MIXING FAUCET w/SWING GOOSENECK
No. L-739(2)-55
SERVICE FITTING #15 HW-CW-15



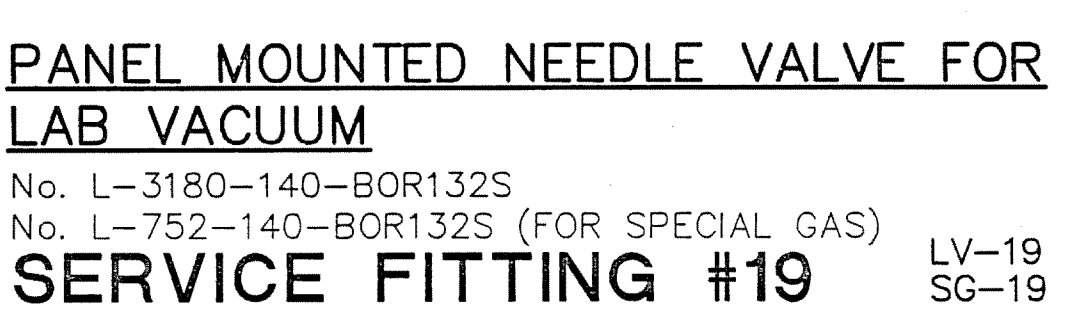
PANEL MOUNTED HIGH PURITY WATER FITTING
No. L-2781-SG HOT TIN LINED w/NONSELF CLOSING HANDLE
SERVICE FITTING #16 DW-16



OVERHEAD SERVICE CARRIER MOUNTED HIGH PRESSURE SERVICE FITTING w/PRESSURE REGULATOR, GAUGE, & QUICK DISCONNECT
No. L-770-61-3300-14
SERVICE FITTING #17 A-17A
A-17B



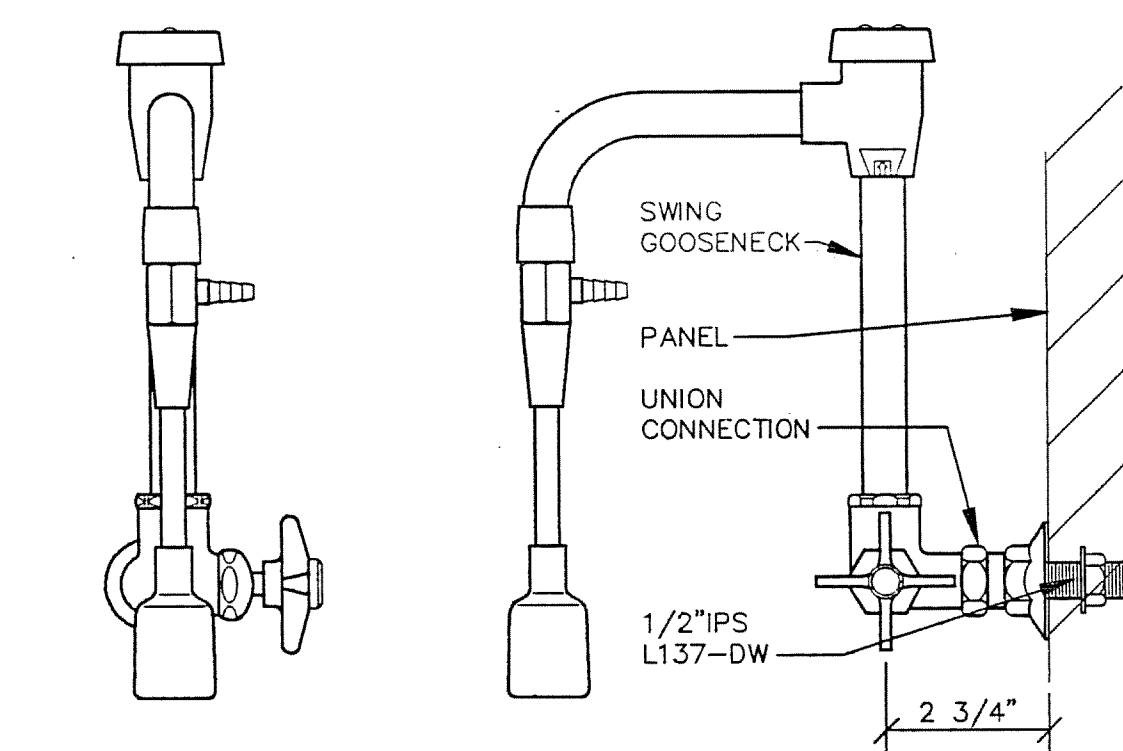
DECK MOUNTED DUPLEX WATER FITTING
No. LR370C-AVC-VB-WSA
SERVICE FITTING #18 CW-18



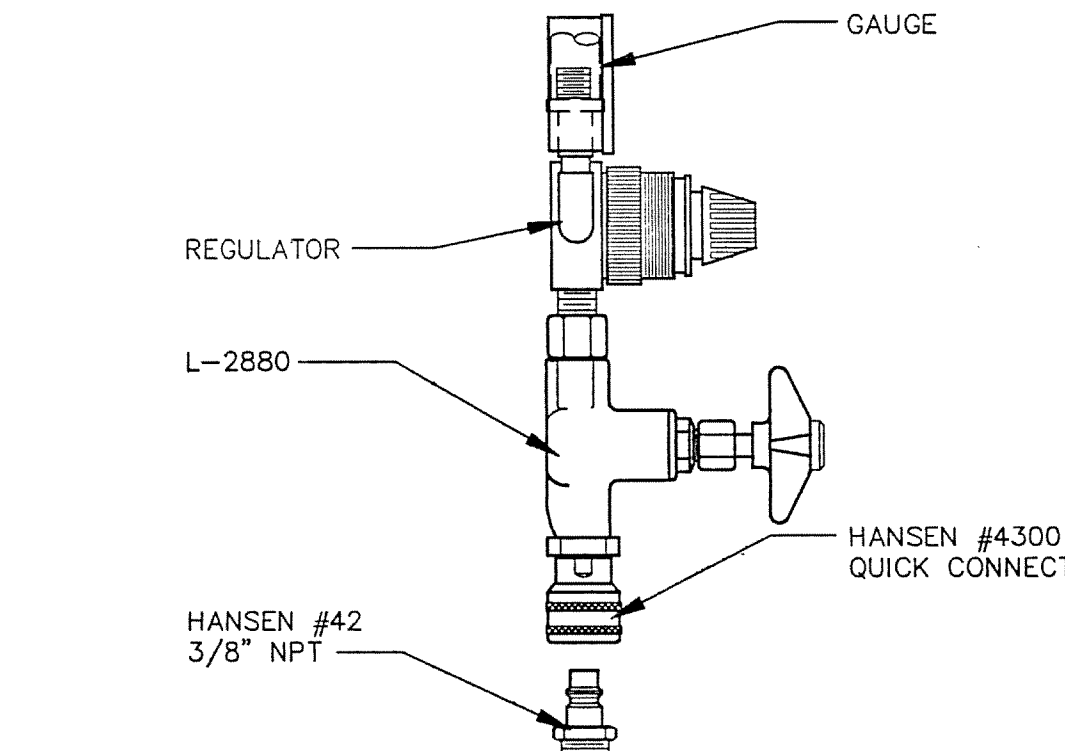
PANEL MOUNTED NEEDLE VALVE FOR LAB VACUUM
No. L-3180-140-BOR132S
No. L-752-140-BOR132S (FOR SPECIAL GAS)
SERVICE FITTING #19 LV-19
SG-19



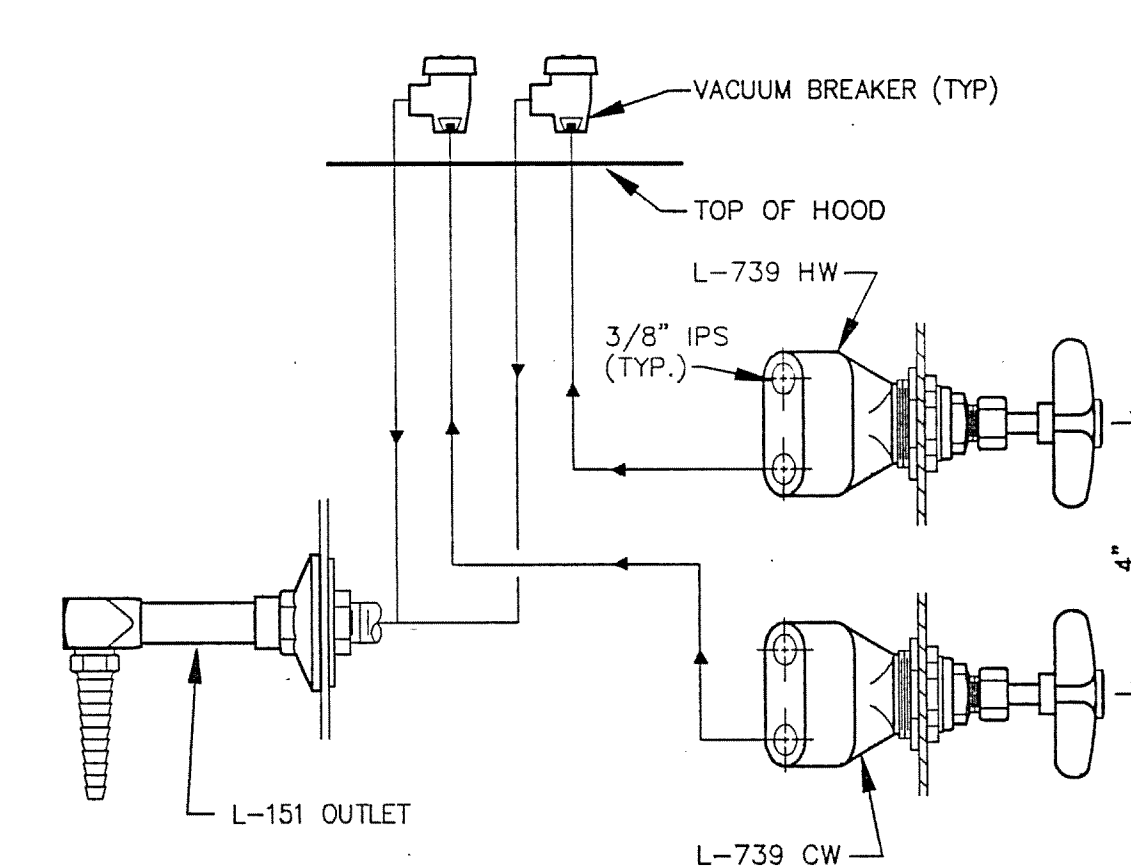
PIPE MOUNTED NEEDLE VALVE FOR SPECIAL GAS, GAS & AIR
WHITEY INTEGRAL BONNET NEEDLE VALVE
No. B-1VM4-S4
SERVICE FITTING #20 SG-20
G-20
A-20



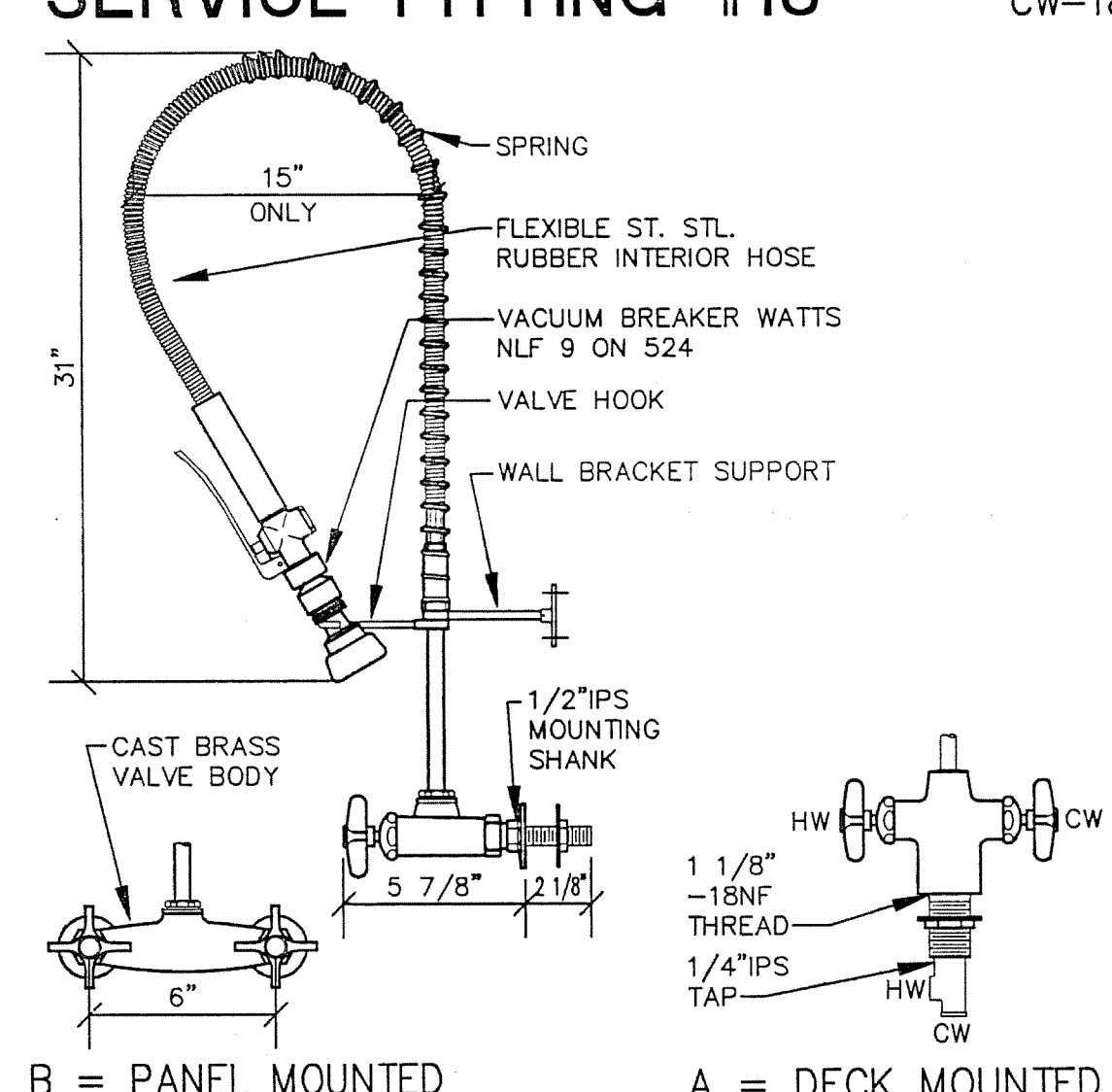
PANEL MOUNTED WATER FITTING WITH ASPIRATOR
L-2712-VB-127
SERVICE FITTING #21 CWA-21



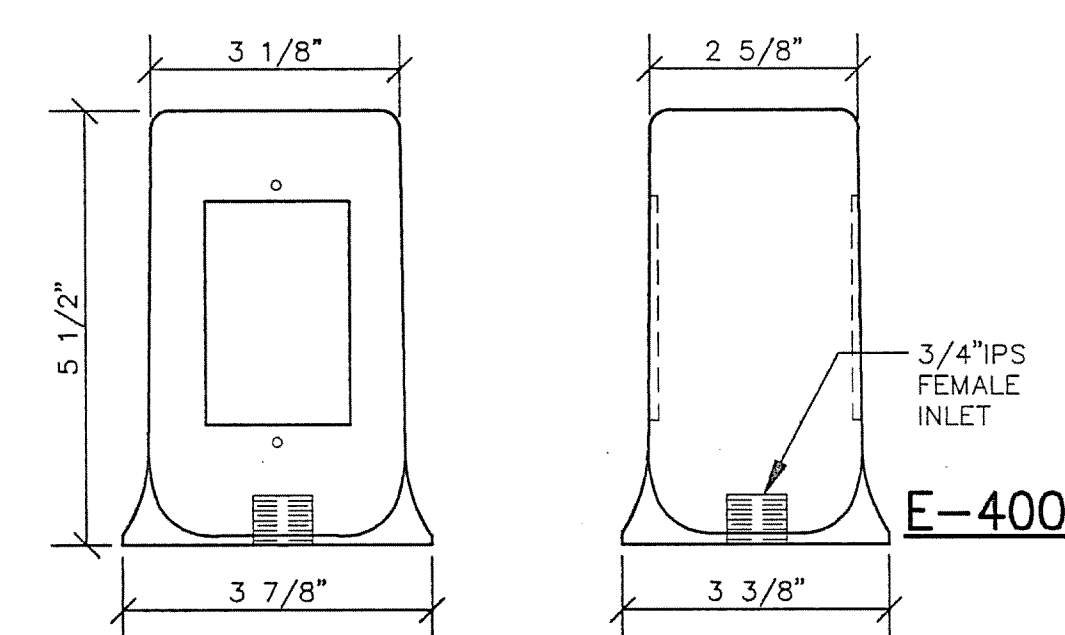
PIPE MOUNTED HIGH PRESSURE AIR FITTING w/REGULATOR & GAUGE
No. L-2800-365-4300-42
SERVICE FITTING #22 A-22



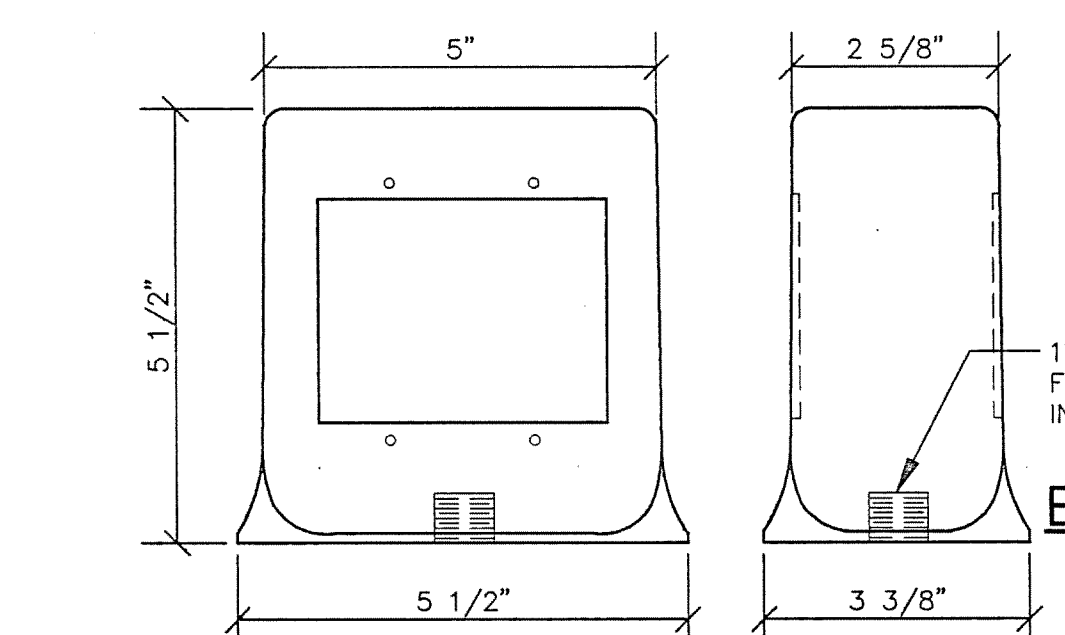
HOOD MOUNTED FITTING FOR HW-CW MIXING FAUCET
No. L-739(2)-55-151
SERVICE FITTING #23 HW-CW-23



DECK & PANEL MOUNTED PRE-RINSE FITTING
A = No. PR431-110 DECK MOUNTED
B = No. PR431-100 PANEL MOUNTED
SERVICE FITTING #24 HW-CW-24A
HW-CW-24B



BENCH MOUNTED ELECTRICAL PEDESTAL
E-1 - E-400 LUSTRE-BRITE ALUMINUM, DOUBLE FACE PEDESTAL BOX
SERVICE FITTING E-1 E-1



BENCH MOUNTED ELECTRICAL PEDESTAL
E-2 - E-600 LUSTRE-BRITE ALUMINUM, DOUBLE FACE PEDESTAL BOX
SERVICE FITTING E-2 A6-BUILT

DRAWING REVISIONS:		
NO.	DATE	REMARKS

DATE:	5/16/94
PROJECT#:	8962
DESIGNED BY:	PJK
DRAWN BY:	MGM
CHECKED BY:	PJK

unwall
Eort Walls Associates
Laboratory Design Consultants
5348 Corral Canyon Road
San Diego, California 92121
(619)457-2400